

## Technical data sheet

**SIMPSON**

**Strong-Tie**

### GAR Anti-rodent mesh

*The Anti Rodent Mesh allow a good ventilation of the cladding and prevent rodent and insect from coming inside.*

## Features

### Material

- Steel S250GD,
- Finish ZPRO.

### Advantages

- Diameter of the holes are 3mm : it prevent most of the insect to enter,
- Mesh provided in 25m roller: stock and transportation is simplified, reduction of drop and overlap when in bars,
- Finish equivalent to stainless steel A2: good resistance to corrosion
- Conform to french standard DTU41.2 for ventilation.

## Applications

### Header member

- Solid timber, Engineered timber, glulam.

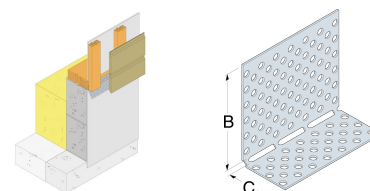
### Intend of Use

- Timber frame,
- Cladding.



GAR  
Anti-rodent mesh

## Technical Data



### Product Dimensions

| References  | Tun / DB nr. | NOB nr.  | Folded dimensions [mm] |    | Flat dimensions |                  |                | Holes [mm] |          | Packaging [mm] | Weight [kg] |
|-------------|--------------|----------|------------------------|----|-----------------|------------------|----------------|------------|----------|----------------|-------------|
|             |              |          | A                      | E1 | Width [mm]      | Total Length [m] | Thickness [mm] | Round      | Oblong   |                |             |
| GAR22/45/25 | 1865791      | 51166080 | 45                     | 22 | 67              | 25               | 0.8            | Ø 3        | Ø 3 x 12 | -              | 8           |
| GAR25/42/25 | 1865792      | 51166095 | 42                     | 25 | 67              | 25               | 0.8            | Ø 3        | Ø 3 x 12 | -              | 8           |
| GAR         | -            | -        | -                      | -  | -               | -                | -              | -          | -        | -              | -           |
| GAR27/40/25 | -            | -        | 40                     | 27 | 67              | 25               | 0.8            | Ø 3        | Ø 3 x 12 | -              | 7.7         |
| GAR30/70/25 | -            | -        | 70                     | 30 | 100             | 25               | 0.8            | Ø 3        | Ø 3 x 12 | -              | 11.5        |
| GAR40/60/25 | -            | -        | 60                     | 40 | 100             | 25               | 0.8            | Ø 3        | Ø 3 x 12 | -              | 11.5        |

### Opening areas of the mesh

| References  | Flange B                        |                             | Flange C                        |                             |
|-------------|---------------------------------|-----------------------------|---------------------------------|-----------------------------|
|             | Dimensions and drill holes [mm] | Ratio d'ouverture [cm² / m] | Dimensions and drill holes [mm] | Ratio d'ouverture [cm² / m] |
| GAR22/45/25 | 45                              | 113                         | 22                              | 58                          |
| GAR25/42/25 | 42                              | 104                         | 25                              | 67                          |
| GAR27/40/25 | 40                              | 102                         | 27                              | 68                          |
| GAR30/70/25 | 70                              | 176                         | 30                              | 77                          |
| GAR40/60/25 | 60                              | 148                         | 40                              | 105                         |

## GAR Anti-rodent mesh

### Installation

#### How to choose

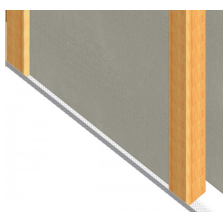
- **GAR22/45/25** : for stud of 22mm or two 22mm = **44mm**.
- **GAR25/42/25** : for stud **25 mm** or **27 mm** or two studs **27+18 = 45 mm**.

#### Complementary notes

**The Anti Rodent Mesh is packaged as 25m roller. It must be cut and folded in house or on site. The oblong holes correspond to the folded line. Gloves and glasses must be used to use this product.**

#### Fasteners

**The fasteners used to fix the GAR to the stud are CNA2.5x35**



GAR  
Anti-rodent mesh

